

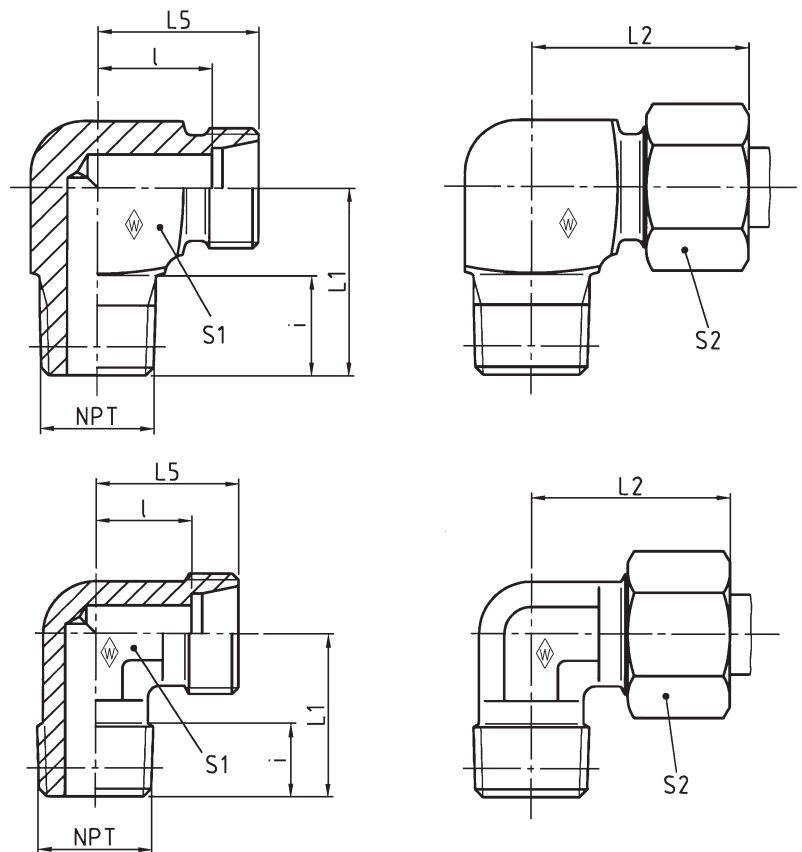
Winkel-Einschraubstutzen
Male stud elbow (body only)
Equerre m le (corps)



WES NPT

Einschraub-
gewinde: NPT (ANSI/ASME B1.20.1-1983)
Stud thread: NPT (ANSI/ASME B1.20.1-1983)
Filetage m le: NPT (ANSI/ASME B1.20.1-1983)

Rohr-AD 4 bis 12 mm = Profilmaterial
Tube OD 4 to 12 mm = profile material
Tube Ø ext. 4 - 12 mm = mat riau profil



Reihe Series	PN bar (psi)	Rohr-AD Tube OD Tube Ø ext.	NPT	Typ Type D signation	Best.-Nr. Reference R f.	kg per 100 St. kg per 100 pcs. kg par 100 p.	L ₁	L ₂	L ₅	l	i	S ₁	S ₂
LL	100 (1450)	4	1/8 NPT	WES 4 LL/ 1/8 NPT	037670	1,4	17	21	15	11	10	10	10
		6	1/8 NPT	WES 6 LL/ 1/8 NPT	037672	1,7	17	21	15	9,5	10	10	12
		8	1/8 NPT	WES 8 LL/ 1/8 NPT	037673	2,3	20	23	17	11,5	10	12	14
L	250 (3626)	6	1/8 NPT	WES 6 L/ 1/8 NPT	037674	2,8	20	27	19	12	10	12	14
		8	1/4 NPT	WES 8 L/ 1/4 NPT	037675	4,5	26	29	21	14	15	14	17
		10	1/4 NPT	WES 10 L/ 1/4 NPT	037676	6,0	27	30	22	15	15	17	19
	160 (2321)	12	1/4 NPT	WES 12 L/ 1/4 NPT	037677	8,1	28	32	24	17	15	19	22
		12	3/8 NPT	WES 12 L/ 3/8 NPT	037678	8,6	28	32	24	17	15	19	22
		15	1/2 NPT	WES 15 L/ 1/2 NPT	037679	8,8	34	36	28	21	14	19	27
S	100 (1450)	18	1/2 NPT	WES 18 L/ 1/2 NPT	037680	13,1	36	40	31	23,5	20	24	32
		22	3/4 NPT	WES 22 L/ 3/4 NPT	037681	14,9	42	44	35	27,5	20	27	36
	630 (9137)	28	1 NPT	WES 28 L/1 NPT	037682	28,3	48	47	38	30,5	23	36	41
		6	1/4 NPT	WES 6 S/ 1/4 NPT	037685	5,3	26	31	23	16	15	14	17
		8	1/4 NPT	WES 8 S/ 1/4 NPT	037686	7,3	27	32	24	17	15	17	19
		10	3/8 NPT	WES 10 S/ 3/8 NPT	037687	9,7	28	34	25	17,5	15	19	22
		12	3/8 NPT	WES 12 S/ 3/8 NPT	037688	12,1	28	38	29	21,5	15	22	24
		14	1/2 NPT	WES 14 S/ 1/2 NPT	037689	10,3	33	40	30	22	15	19	27
	400 (5801)	16	1/2 NPT	WES 16 S/ 1/2 NPT	037690	13,8	33	43	33	24,5	17	24	30
		20	3/4 NPT	WES 20 S/ 3/4 NPT	037691	19,7	42	48	37	26,5	20	27	36
		25	1 NPT	WES 25 S/1 NPT	037692	36,0	48	54	42	30	23	36	46

L₂ = Ungef hrmaß bei angezogener Überwurfmutter
L₂ = approximate length with nut tightened
L₂ = longueur approximative, l' crou tant bloqu

